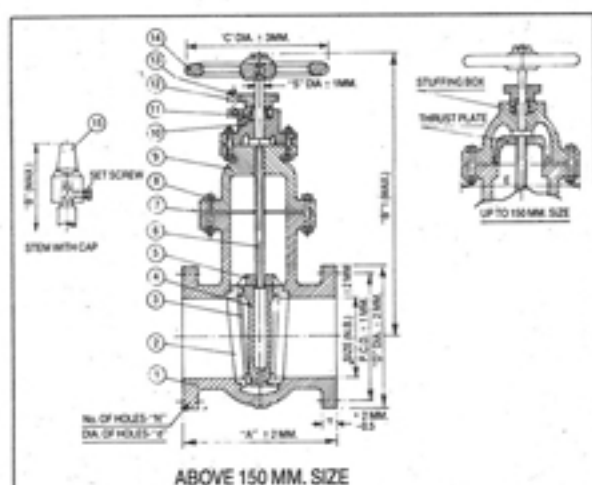


CAST IRON SLUICE VALVES NON-RISING STEM FLANGED ENDS CONFORMING TO IS:780/1984



BILL OF MATERIAL		
ITEM NO.	DESCRIPTION	MATERIAL & SPECIFICATION
1	BODY	CAST IRON, IS-210 GR. FG 220
2	WEDGE	-Do-
3	BONNET	-Do-
4	GLAND	-Do-
5	STUFFING BOX	-Do-
6	HAND WHEEL	-Do-
7	CAP	-Do-
8	BOOPHARING	BRONZE, IS-318 GR. LTB 2% S. AND 10%
9	WEDGE SEAT RING	-Do-
10	WEDGE NUT	BRONZE, IS-318 GR. LTB 2% S. AND 10%
11	STEM	HIGH TENSILE BRASS IS-230, RT. 2% S. AND 4%
12	BONNET GASKET	COMPRITED FIBRE ASBESTOS 10% THICK
13	GLAND PACKING	GRAPHITED ASBESTOS 10% YARN
14	BONNET NUTS, BOLTS	CARBON STEEL, IS-1167-1967 CL. 4.6CL.4
15	GLAND NUTS, BOLTS	-Do-

DIMENSIONS OF SLUICE VALVES FOR NOMINAL PRESSURE PN-1 IS : 780-1984

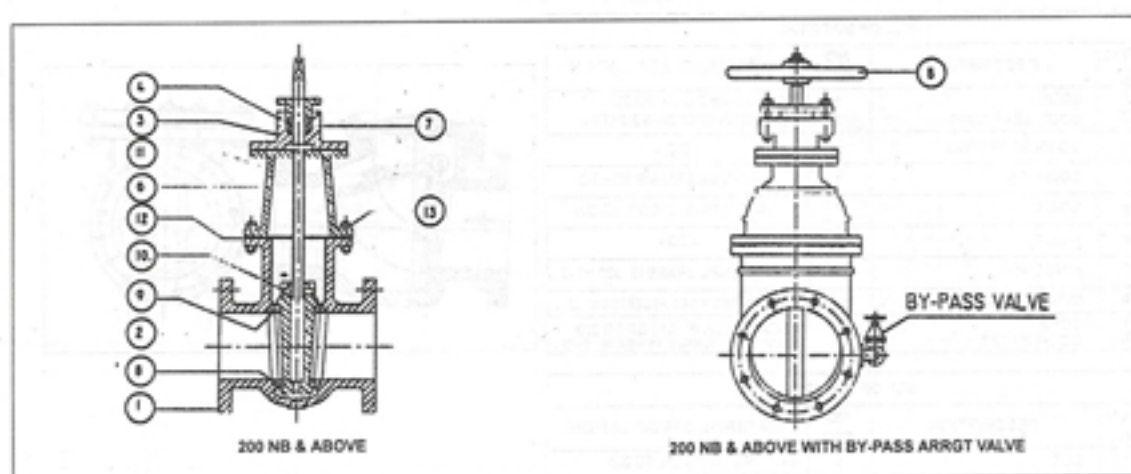
Size N.B.	Face to face	Centre to top of cap	Centre to top of hand wheel	Dia of hand wheel	Wall thickness of body	Wall thickness of bonnet	Dia of stem	Dia of stem thru collar	Thickness of stem thru collar	Width (max.)	I.D. of stuffing box	Depth of stuffing box	Sq. on top of stem	Length of sq. on stem	Depth of wedge nut	Size of set screw	Hydraulic Test pressure (Gauge) MPa		Test duration (min)	
																	Body	Seat	Body	Seat
50 mm	215	425	365	225	8	8	24	46	11	190	44	42	17x0.5	31x2	30	M 10	1.5	1.0	5	2
65 mm	230	450	390	225	8.5	8.5	24	46	11	200	44	42	17x0.5	34x2	30	M 10	1.5	1.0	5	2
80 mm	230	480	425	225	9	9	24	46	11	220	44	42	17x0.5	34x2	30	M 10	1.5	1.0	5	2
100 mm	255	558	470	320	10	9	28	52	14	250	48	42	19x0.5	38x2	35	M 10	1.5	1.0	5	2
125 mm	266	600	540	320	11	10	28	52	14	300	48	42	19x0.5	38x2	35	M 10	1.5	1.0	5	2
150 mm	280	678	593	320	12	11	28	56	14	330	52	51	19x0.5	38x2	35	M 10	1.5	1.0	5	2
200 mm	318	780	725	360	13	12	32	56	14	400	56	51	22x0.5	42x2	42	M 12	1.5	1.0	5	2
250 mm	355	900	835	400	14.5	13.5	36	60	16	495	60	51	25x0.5	48x2	48	M 12	1.5	1.0	5	2
300 mm	380	1010	940	400	15	14	36	63	18	585	60	51	25x0.5	48x2	48	M 12	1.5	1.0	5	2

DIMENSIONS OF SLUICE VALVES FOR NOMINAL PRESSURE PN-1.6 IS : 780-1984

Size N.B.	Face to face	Centre to top of cap	Centre to top of hand wheel	Dia of hand wheel	Wall thickness of body	Wall thickness of bonnet	Dia of stem	Dia of stem thru collar	Thickness of stem thru collar	Width (max.)	I.D. of stuffing box	Depth of stuffing box	Sq. on top of stem	Length of sq. on stem	Depth of wedge nut	Size of set screw	Hydraulic Test pressure (Gauge) MPa		Test duration (min)	
																	Body	Seat	Body	Seat
50 mm	215	450	390	280	8	8	26	52	15	190	50	53	18x0.5	38x2	34	M 10	2.4	1.6	5	2
65 mm	230	480	420	280	8.5	8.5	26	52	15	225	50	53	18x0.5	38x2	34	M 10	2.4	1.6	5	2
80 mm	230	520	460	280	9	9	26	52	15	250	50	53	18x0.5	38x2	34	M 10	2.4	1.6	5	2
100 mm	255	600	520	360	10	9	30	55	16	290	54	53	21x0.5	42x2	40	M 12	2.4	1.6	5	2
125 mm	266	640	575	360	12	11	30	55	16	325	54	53	21x0.5	42x2	40	M 12	2.4	1.6	5	2
150 mm	280	690	625	360	13	12	32	58	16	350	56	53	22x0.5	44x2	40	M 12	2.4	1.6	5	2
200 mm	318	830	765	450	14.5	13.5	38	67	18	480	70	58	26x0.5	50x2	50	M 12	2.4	1.6	5	2
250 mm	355	940	875	450	15.5	14.5	44	73	20	575	76	58	30x0.5	55x2	60	M 12	2.4	1.6	5	2
300 mm	380	1025	965	450	16.5	15.5	44	75	20	670	76	58	30x0.5	55x2	60	M 12	2.4	1.6	5	2

CAST IRON NON - RISING SPINDLE GATE VALVE

FIG. NO. AS PER IS : 14846 / 2000



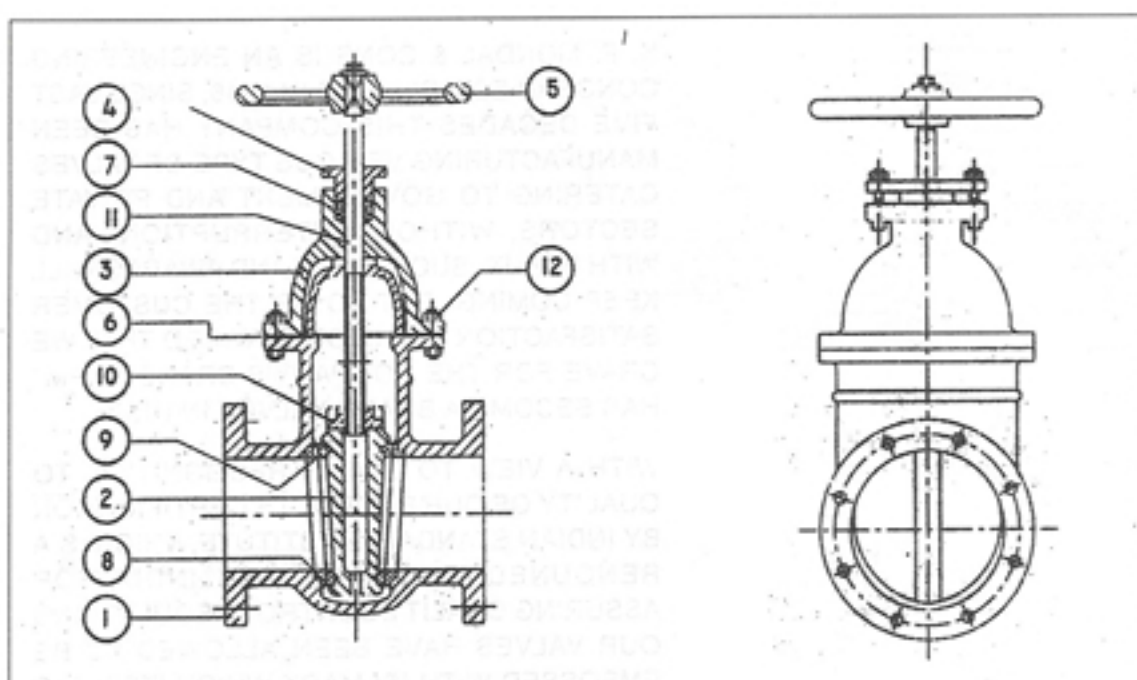
IT NO	DESCRIPTION	MATERIALS & SPECN
1	BODY	CAST IRON TO IS : 210 GR. FG 200
2	WEDGE	- DO -
3	BONNET	- DO -
4	GLAND	- DO -
5	HAND WHEEL/CAP	- DO -
6	COVER	- DO -
7	PACKING	JUTE & HEMP IS : 5414

IT NO	DESCRIPTION	MATERIALS & SPECN
8	BODY SEAT RING	LEADED TIN BRONZE IS : 318 LTB-2
9	WEDGE SEAT RING	- DO -
10	WEDGE NUT	- DO -
11	STEM	S. S. TO IS : 6003 GR. 12 CR. 13 H. T. B TO IS 320 HTB-2
12	GASKET	RUBBER IS 638/TYP E 8
13	NUT & BOLTS	C. S. IS 1363 CL - 4.6/4

VALVE SIZE	BODY					STEM			STUFFING BOX			CAP				
	PD	ALT-I	ALT-II	WIDTH MAX	OVERALL HEIGHT	SQUARE	LENGTH OF SQUARE	DIA OF STEM	DEPTH OF NUT	INSIDE DIA	PACKING SIZE	NO. OF PACKING	DEPTH	SIZE OF HAND WHEEL	SIZE OF BOTTOM SQUARE	LENGTH OF SQUARE
200	292	400	318	490	725	22	42	32	45	56	12	5	65	360	35	60
250	330	450	355	495	835	25	48	36	50	60	12	5	65	400	35	60
300	356	500	380	585	910	25	48	36	50	60	12	5	65	400	35	60
350	381	550	-	650	1020	25	45	37	50	61	12	5	65	500	48	75
400	406	600	-	750	1110	31	54	42	55	66	12	5	65	640	48	75
450	432	650	-	830	1200	34	64	47	55	75	14	5	75	720	48	75
500	457	700	-	900	1300	34	64	47	55	75	14	5	75	720	48	75
600	508	800	-	1050	1500	34	64	47	55	75	14	5	75	720	48	75
700	610	900	1130	1150	1670	44	78	62	65	94	16	6	100	800	65	100
750	610	950	1200	1200	1780	48	86	67	70	99	16	6	100	900	65	100
800	660	1000	1250	1300	1930	48	86	67	70	99	16	6	100	900	65	100
900	711	1100	1380	1400	2080	53	88	77	110	113	18	6	113	900	65	100
1000	811	1200	1500	1500	2200	53	88	77	110	113	18	6	113	900	65	100
1100	85	85	1650	1650	2450	63	99	87	115	123	18	6	113	1000	65	100
1200	85	85	1800	1800	2580	63	99	87	115	123	18	6	113	1000	65	100

CAST IRON NON - RISING SPINDLE GATE VALVE

FIG. NO. AS PER IS : 14846/2000



IT NO	DESCRIPTION	MATERIALS & SPECN
1	BODY	CAST IRON TO IS : 210 GR. FG 200
2	WEDGE	- Do -
3	BONNET	- Do -
4	GLAND	- Do -
5	HAND WHEEL/CAP	- Do -
6	GASKET	RUBBER IS 638/TYP E B

IT NO	DESCRIPTION	MATERIALS & SPECN
7	PACKING	JUTE & HEMP IS : 5414
8	BODY SEAT RING	LEADED TIN BRONZE IS : 318, LTB-2
9	WEDGE SEAT RING	- Do -
10	WEDGE NUT	- Do -
11	STEM	S. S. TO IS : 6003 GR. 12 CR. 13 H. T. B TO IS 320 HTB-2
12	NUT & BOLTS	C. S. IS : 1363 CL - 4.6/4

VALVE SIZE	BODY					STEM			STUFFING BOX			CAP				
	PD	ALT-I	ALT-II	WIDTH MAX	OVERALL HEIGHT	SQUARE	LENGTH OF SQUARE	DIA OF STEM	DEPTH OF NUT	INSIDE DIA	PACKING SIZE	NO. OF PACKING	DEPTH	SIZE OF HAND WHEEL	SIZE OF BOTTOM SQUARE	LENGTH OF SQUARE
50	178	250	215	160	365	15	30	22	30	42	10	4	45	225	35	60
65	190	270	230	215	380	15	30	22	30	42	10	4	45	225	35	60
80	203	280	230	220	425	15	30	22	30	42	10	4	45	225	35	60
100	229	300	255	250	470	18	36	27	35	47	10	4	45	320	35	60
125	254	325	286	310	495	18	36	27	35	47	10	5	55	320	35	60
150	267	350	280	330	595	18	36	27	35	47	10	5	55	320	35	60