



BOOM BARRIER

PARKAR



The PARKAR Series Vehicle Barrier is very simple yet elegantly designed with dual tone colour option (RAL shades) of yellow and grey that makes it stand out in bright as well as poorly lit dark environment. The Parkar is offered with ABS top cover to avoid scratches.

The Parkar is ideal for processing vehicular traffic in and out of parking, residential complexes, commercial & office buildings etc. This vehicle barrier has at its heart a 'concealed lubricated drive' that offers several years of trouble-free performance.

The Parkar is offered with a Boom Length of 3m to 5m straight arm that open/close at a speed of 3.5s to 6s. This barrier can also be controlled through a mobile app that is specially designed in addition to the other conventional ways (push button, wireless remote, RFID, etcetera).

ACCESSORIES



Wireless Remote



Photo Beam Sensor

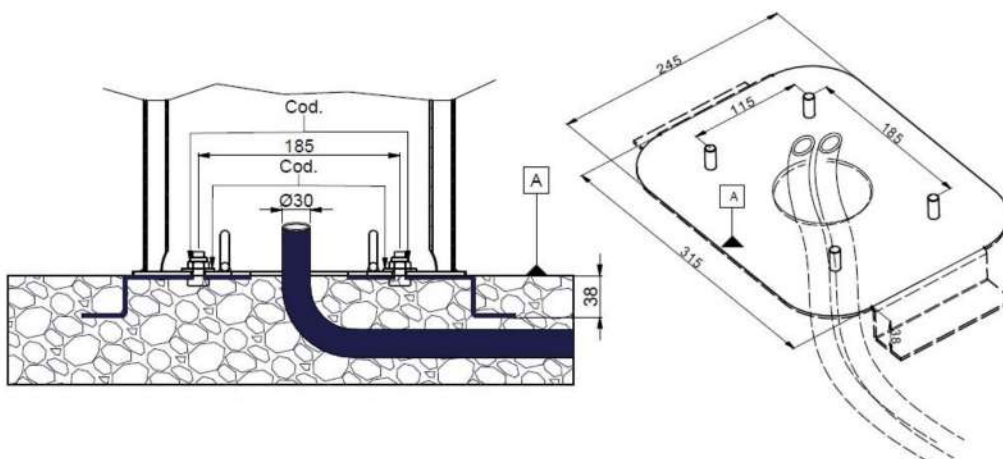
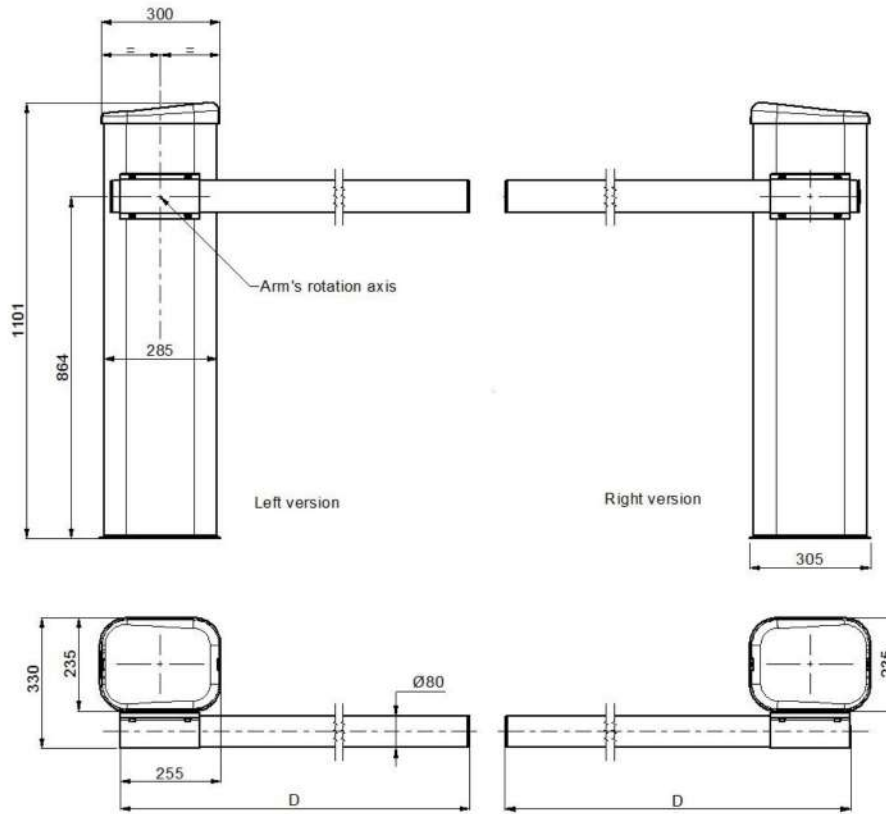


*Accessories to be purchased separate

BOOM BARRIER

PARKAR

Dimensions





BOOM BARRIER

PARKAR

DESCRIPTION	PARTICULAR
Make	Ravel Movement Control
Model	RMC-PARKAR
Material Of Construction	Electrowelded Steel (2mm)
Application	Indoor / Outdoor
Housing Dimension (in mm)	290 L X 220 W X 1100 H
Boom Arm	Extruded Aluminum profile (Dia 80 mm)
Arm Length	1 - 5 Mtrs
Arm Direction	Left / Right exchangeable
Power Supply	240V AC 50Hz
Current	Maximum 1.8 Amps
Operating Temperature	-20°C to +60°C
Motor	24V DC
Power Consumption	60W
RPM	1700 RPM
Torque	100 Nm
Open/Close Time	3.5 to 6 Secs
Emergency Release	via Manual key
Communication Interface	RS-485 or TCP/IP RJ45
Ingress Protection	IP55
Duty Cycle	Intense
Operations Per Hour	120
Humidity	10 to 95%
Weight of the Product	38 Kg
Features	Mobile operating app, Wireless remote